

# BROWN AND HURLEY

The BIG TRUCK People

KYOGLE - 266 Summerland Way, Kyogle NSW 2474 - Ph: 02 6632 0333  
DARRA - 2632 Ipswich Road, Darra Qld 4076 - Ph: 07 3363 8000  
TOWNSVILLE - 662 Ingham Road, Bohle Qld 4818 - Ph: 07 4758 4000  
COFFS HARBOUR - 2-10 Hurley Drive, Coffs Harbour NSW 2450 - Ph: 02 6648 2222  
ROCKHAMPTON - 985-1005 Yaamba Road, Parkhurst Qld 4702 - Ph: 07 4923 8000  
YATALA - 26 Burnside Road, Yatala Qld 4207 - Ph: 07 3441 7000  
TOOWOOMBA - 28-30 Carrington Road, Torrington, Toowoomba Qld 4350 - Ph: 07 4690 7300  
TAMWORTH - 81A Barnes Street, Tamworth NSW 2340 - Ph 02 6762 2922

BROWNANDHURLEY.COM.AU

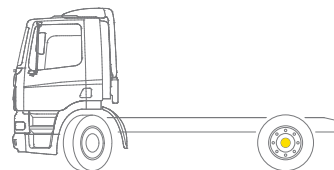
## FT CF75

4X2 PRIME MOVER

### AT A GLANCE

GVM: 17400 kg\*  
GCM: 38000 kg\*  
Max Output: Up to 360 hp (265 kW) at 2200 rpm  
Max Torque: Up to 1070 lb/ft (1450 Nm) at 1100 -1700 rpm

\* Maximum GVM and GCM figures shown may exceed certain Australian state regulations.



CF

DRIVEN BY QUALITY

TRUCKS | PARTS | FINANCE

WWW.DAF.COM.AU

DAF

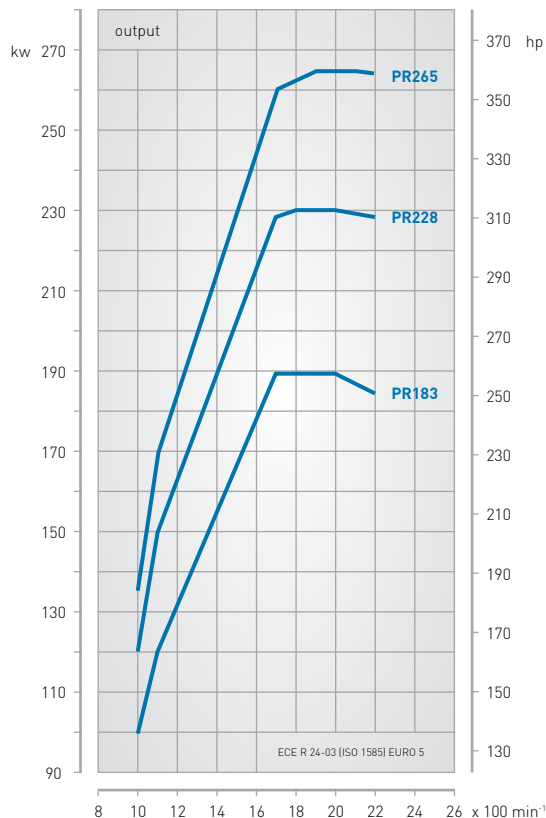
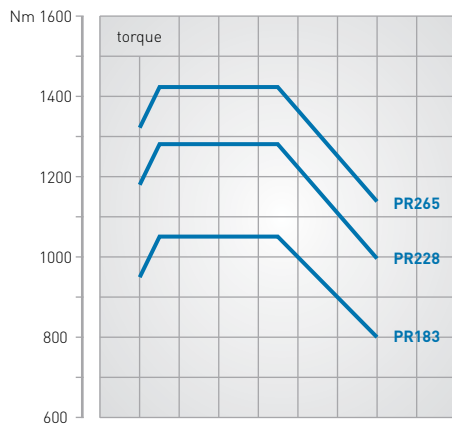
A PACCAR COMPANY

# FT CF75

## 4X2 PRIME MOVER

### PACCAR PR ENGINE

PACCAR:	6 cylinder, turbo intercooled
Piston displacement:	9.2 litres
Compression ratio:	17.4 to 1
Fuel injection:	Electronically controlled
<b>Type:</b>	PR 183
Max. output:	249 hp (183 kW) at 2200 rpm
Max. torque:	775lb/ft (1050 Nm) at 1100-1700 rpm
<b>Type:</b>	PR 228
Max. output:	310 hp (228 kW) at 2200 rpm
Max. torque:	940 lb/ft (1275 Nm) at 1100-1700 rpm
<b>Type:</b>	PR 265
Max. output:	360 hp (265 kW) at 2200 rpm
Max. torque:	1070 lb/ft (1450 Nm) at 1100-1700 rpm



### CHASSIS

Completely flat topped chassis frame; Riveted and bolted construction of channel-section main frame members (tapered at the rear end) and cross members; 1 x 430 litre aluminium fuel tank; Fuel tank height – 620 mm; 1 x 75 litre AdBlue tank (50 litre with spare wheel carrier); Horizontal box type silencer at RHS; Spray suppression behind steer tyre; Front Under-run Protection System (FUPS); Catwalk and step; Main frame members with angle sections for mounting of fifth wheel at 50 mm even spacing; Dimensions main frame members: 260 x 75 x 6 mm or 260 x 75 x 7 mm with front inner reinforcement.

#### Options:

- 340 litre aluminium fuel tank	- 1 x 340 and 1 x 430 litre aluminium fuel tanks
- Spare wheel carrier with spare wheel (only with 1 fuel tank)	- 1 x 750 litre aluminum fuel tanks (not with 3.25 m wheelbase)

### GEARBOX

16S1800: ZF synchro 4-speed main gearbox with range-change group and splitter group, giving 16 speeds.

#### Options:

- 12AS1630: ZF 12-speed, automated manual, ZF AS-Tronic transmission
- 16S1600: ZF synchro 4-speed main gearbox with range-change group and splitter group, giving 16 speeds
- 12A1420: ZF 12-speed, automated manual, ZF AS-Tronic transmission

	PR 183	PR 228	PR 265
16S1600-16.41/1.00	-	-	X
12AS1630-15.86/1.00	-	-	X
16S1800-15.8/0.84	X	X	-
12AS1420-10.37/0.81	X	X	-
12AS1930-12.33/0.78	X	X	-

### CLUTCH

Single type, pushed operation, asbestos free, dry plate, hydraulically operated and pneumatically assisted with torsional damper.

Diameter: 430 mm

### FRONT AXLE

Type: 152N

Max. design load: 7500 kg

I-section axle. Stub axles with needle bearings.

### REAR AXLE

Type: SR 1344

Max. design load: 13000 kg

Single reduction driven axle with diff lock.

Ratio: 3.70, 4.11, 4.63

### FRONT SUSPENSION

Parabolic type leaf springs with shackled ends at rear – maintenance free. Shock absorbers and stabiliser bar.

Spring dimensions: 1x1800x80x28 + 1x1800x80x30 mm (7500 kg)

## REAR SUSPENSION

DAF 4 bag ECAS (Electronically Controlled Air Suspension); Shock absorbers and stabiliser bar.

Max. design load: 13000 kg

### Option:

Axle load monitoring

## WHEELS AND TYRES

22.5" (10 stud 335 PCD) Silver steel disc wheels with 295 / 80 R22.5 tubeless radial tyres at front and dual 11 R22.5 tyres at rear.

### Options:

- Alcoa Dura-Bright wheels
- Alcoa aluminium satin disc wheels
- Wheel protection rings

## STEERING

Type: Hydraulic power steering with adjustable steering column for rake and height

## COLOURS

Cab colour: M8870 Ice White

Chassis colour: Black

Mirror cover: Black

Bumper colour: Cab colour

### Options:

- Mirror covers cab colour
- Various non-standard and metallic cab and chassis colours available. Ask your local dealer for a colour guide

## BRAKE SYSTEM

Dual circuit air operated disc brakes with wear indicators at front and rear.

Disc Brake dimensions: 430 x 45 mm

EBS (Electronic Braking System incorporating ABS); Emergency/parking brake with spring brake actuators on rear axles; Exhaust brake (retardation power 170 kW at 2800 rpm).

### Options:

- Vehicle stability control (VSC)
- ZF intarder only with AS-Tronic (retardation power 420 kW)
- ASR (Anti-Slip Control).

## ELECTRICAL EQUIPMENT

Voltage: 24 V

Alternator: 80 A

Batteries: 2 x 175 Ah

Starter motor: 24 V

Rear light units: Incorporating direction indicator light, stop light, reversing light, side marker light and reflector mounted on c-channel; Reverse warning alarm.

Battery isolation: Main switch with manual control located near the battery box.

## TRAILER EQUIPMENT

Semi trailer brake connectors: 2-line with suzi couplings 24V EBS 7-pin connector for EBS

Semi trailer light connectors: Two 7-pin connectors (24V)

## CAB EXTERIOR

F230 tilt Day Cab with 4 coil spring suspension and hydraulic tilting device; Tilting angle 57.5°; Fixed, illuminated cab steps; Manually controlled roof hatch; Heated and electrically adjustable main and wide angle mirrors; Steel front bumper with foot hold; Combi lights, incorporating driving and fog lights in lower bumper; Rear worklamp; External sun visor; Corner air deflectors; Side collars; Rear window.

### Options:

- Sleeper Cab
- Adjustable roof spoiler
- Space Cab with skylights
- Air horns (single set)
- Air horns (double set Space Cab only)
- Remote hatch control (Space Cab only)

## CAB INTERIOR

High quality trim and upholstery in natural camel-grey colour; Cab floor cover includes easy-clean top layer in camel-grey; Cockpit style dashboard, including DIP (driver information panel) and AdBlue indicator; Adjustable luxury air suspended driver seat and fixed co-driver seat with head restraint; Various storage facilities including two cup holders, containers behind seat and overhead compartments; 4 spoke, soft grip steering wheel with integrated control switches; Electric window openers (driver and passenger); Cruise control; Personal road speed limiter; Black dashboard finish; Integrated 3-point seat belt; Air conditioning; Radio/USB/MP3 player with 6 speakers; Antennas: 2 x GSM; Remote control door lock; FMS connector prepared (Fleet Management System).

### Options:

- Hands free telephone kit\*
- 3rd seat (Day Cab only)
- Leather finish steering wheel
- Automatic temperature control
- Lane departure warning system
- Refrigerator (not available with Day Cab or rear window)
- Passenger luxury air seat
- Wood structure dashboard finish
- Additional upper bunk (only with Space Cab)
- SRS air bag (driver) with seat belt pre-tensioner on driver and passenger seats
- Bunk with Sleeper and Space Cab (height depending on refrigerator and storage boxes)
- Driver's seat arm rest (only with AS-Tronic).

\* Subject to phone compatibility, bluetooth adaptor not included

## POWER TAKE OFF (PTO)

Engine speed control connector; PTO prepared.

### Option:

- Various types of PTOs / position combinations – refer to DAF Trucks Australia

## LEGAL COMPLIANCE

- Exhaust Emission Euro 5 ADR 80-03
- ECE R29 Cab Certification
- ADR 83 Noise Certification
- Front Under-run Protection Certification

## APPLICATION CONDITIONS

Air intake with cyclonic filter on cab roof; Standard tool kit; Fuel water separator.

## MAX. SPEED

All vehicles are speed limited to 100 km/h.

# FT CF75

## 4X2 PRIME MOVER

### Safety & Technology

#### SCR - Selective Catalytic Reduction

DAF uses SCR technology – Selective Catalytic Reduction. This SCR technology offers an effective solution to comply with European Euro 5 emission requirements. SCR technology is simple, reliable and efficient.

SCR is an after-treatment system applied to all current PACCAR Euro 5 engines, and is used in conjunction with an advanced high-pressure fuel injection system.

#### EBS

- Anti-lock Braking System (ABS)
- Anti-Slip Control (ASR)
- Brake assist
- Drag torque control
- Hill Start Aid (with AS-Tronic only)

#### VISION

- Side view camera system - Option
- Front (Option) and side view mirrors
- HID Xenon headlights - Option

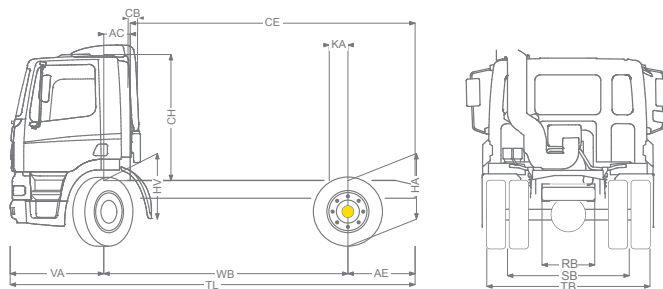
#### DRIVER SUPPORT SYSTEMS

- Adaptive Cruise Control (ACC) with Forward Collision Warning (FCW) - Option
- Lane Departure Warning System (LDWS) - Option
- Vehicle Stability Control (VSC) - Option

#### PASSIVE SAFETY SYSTEMS

- Seat belt reminder
- Airbag and seat belt pre-tensioners
- Front Under-run Protection System

### Technical



1. Chassis and Cab Weight calculated with: Standard specification items and empty fuel tank. With Sleeper Cab; + 105 kg at front; Roof kit with extenders +73 kg.
2. Cab height is measured from frame member to closed cabin roof hatch. With air intake on cab roof: +0.14m.
3. Unladen height at centre of driven axle(s).
4. Laden height at centre of driven axle(s).
5. TK = turning circle between kerbs (For comparison purposes only).
6. TW = turning circle between walls (For comparison purposes only).
7. Unladen height at centre of front axle(s).
8. Laden height at centre of front axle(s).
9. CB is based on standard intake and/or exhaust.

	Wheelbase - AE		Unladen weight <sup>1)</sup>			Variable dimensions								
	WB	AE	Front	Rear	Total	AC	CB <sup>9)</sup>	CE	CH <sup>2)</sup>	TL	HA <sup>3)</sup>	HA <sup>4)</sup>	TK <sup>5)</sup>	TW <sup>6)</sup>
DAY	3.25	0.84	4305	1950	6255	0.39	0.24	3.70	1.86	5.47	0.99	0.96	11.91	13.32
	3.60	0.99	4315	1960	6275	0.39	0.24	4.20	1.86	5.97	0.99	0.97	12.81	14.24
	3.80	0.99	4325	1970	6295	0.39	0.24	4.40	1.86	6.17	0.99	0.96	13.33	14.77
SLEEPER	3.25	0.84	4410	1950	6360	0.82	0.24	3.27	1.86	5.47	0.99	0.96	11.91	13.32
	3.60	0.99	4420	1960	6380	0.82	0.24	3.77	1.86	5.97	0.99	0.96	12.81	14.24
	3.80	0.99	4430	1970	6400	0.82	0.24	3.97	1.86	6.17	0.99	0.96	13.33	14.77

<b>Other dimensions</b>	VA: 1.38	HV <sup>7)</sup> : 0.97	HV <sup>8)</sup> : 0.94	RB: 0.79	SB: 1.82	TB: 2.44	CB <sup>9)</sup> : 0.10
-------------------------	----------	-------------------------	-------------------------	----------	----------	----------	-------------------------

\* Other wheelbase options available. Please see your DAF dealer for more information.

#### WARRANTY

3 year / 500,000 kms, whichever occurs first.

**Conditions apply. For full warranty details, please contact your local DAF dealer.**

The information contained in this spec sheet is for general information purposes only. Please note that the specifications listed above are formulated for a "Base Model" DAF truck. Depending on the vehicle configuration a specific option may not be possible. All weights and measurements stated relate to the basic specification and may vary should different specifications be chosen. In the interest of product improvements, DAF Trucks Australia reserves the right to change these specifications without prior notice. For further information please contact DAF Trucks Australia or your nearest dealership.

For further information or your nearest DAF dealer, visit our website [www.daf.com.au](http://www.daf.com.au)

DAF Trucks Australia  
PO BOX 60  
Bayswater 3153  
Phone: (03) 9721 1600